



For Lease  
2500 W 7th St  
Westlake-MacArthur Park





Completed in 1924 in the Spanish Colonial Revival style by architects Morgan, Walls & Clements, 2500 W 7th St is one of MacArthur Park's most architecturally stunning buildings. A recently completed restoration and building modernization underscores the building's historic character.

Anchor tenants at 2500 W 7th St include MacArthur Park mainstays Aardvark Letterpress and paper supply shop McManus & Morgan (established 1923).

Joining Aardvark and McManus & Morgan is leading LA-based architecture and design group, Commune Design, gallerist Hannah Hoffman, and coffee shop Jurassic Magic (opening Spring 2024).

#### Available Spaces

Retail C	±749 RSF
Retail D	±743 RSF

#### Rent

Call Broker for Details

Term: 3-10 Years

Occupancy: Available Now

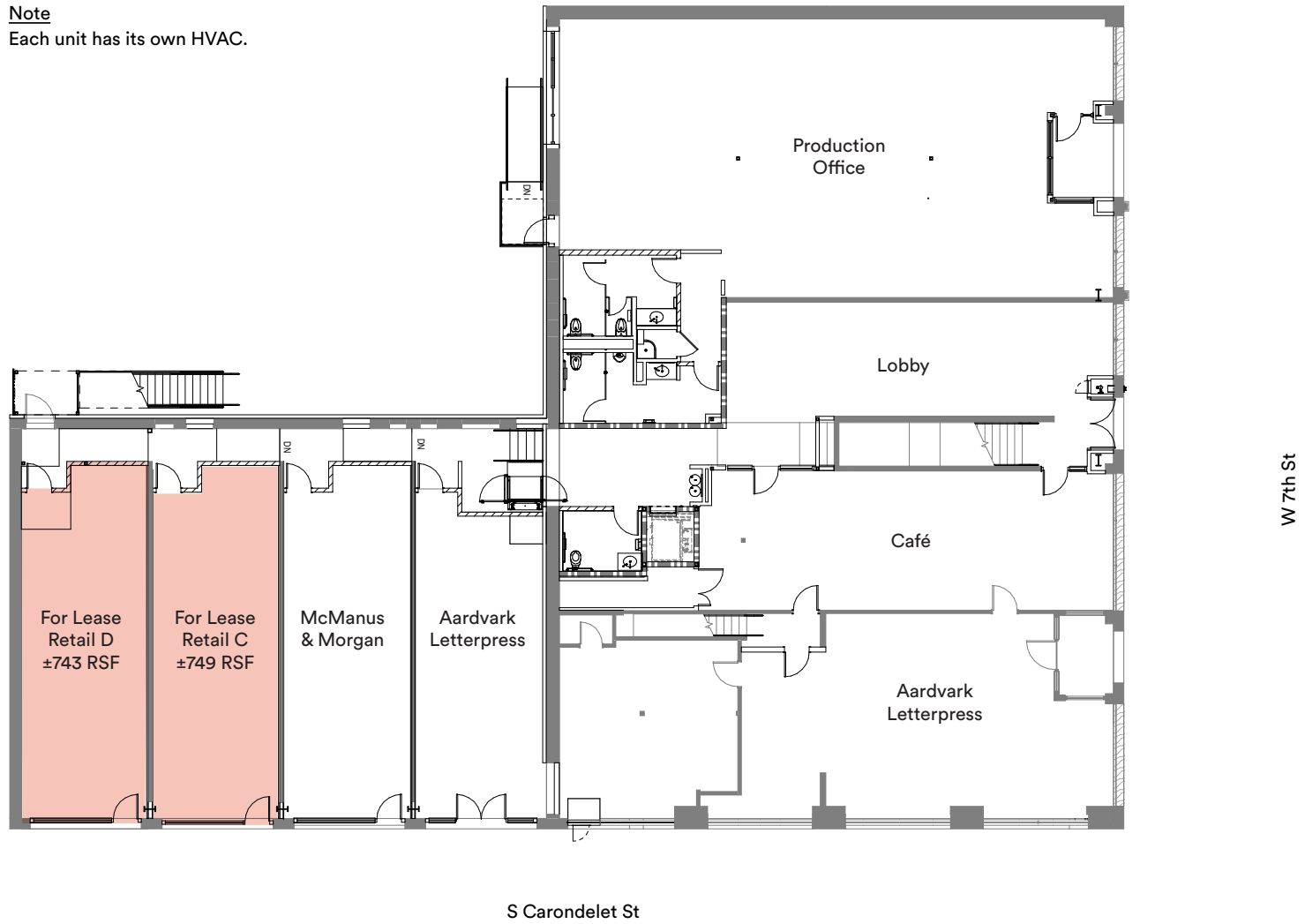
#### Building Features

- The building has been completely renovated while maintaining its historic character and detailing.
- Restored architectural features include the Churrigueresque detailing found on windows and the main entrance way.
- Centrally located within one of LA's most diverse neighborhoods.
- The Westlake / MacArthur Park Station (B & D lines) is only a 5 minute walk.

#### Details

- Commune-designed interior and exterior details in the building.
- Custom wood windows & doors.
- Polished concrete and wood flooring.
- 9-15 foot ceiling heights.
- On-street parking and at surrounding public lots.

Note  
Each unit has its own HVAC.



**Retail C**  
**Ground Floor Retail**  
**± 749 RSF**

Term: 3-10 Years  
Occupancy: Available Now



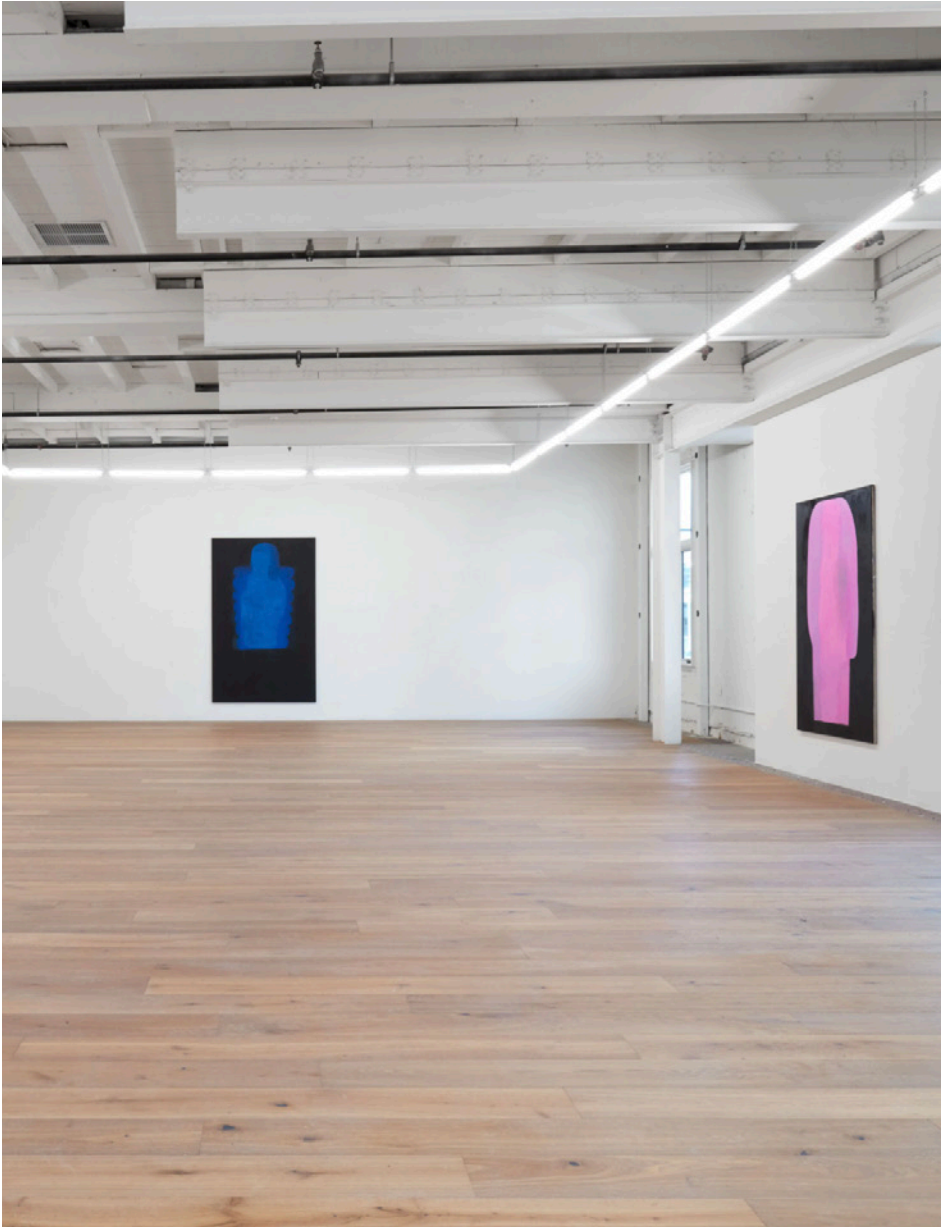


**Retail D**  
**Ground Floor Retail**  
**± 743 RSF**

Term: 3-10 Years  
Occupancy: Available Now







Hannah Hoffman



Commune Design

Commune's El Centro project in Hollywood



Aardvark Letterpress



Westlake-MacArthur Park's story goes back to the late 1800s. The neighborhood's park was built around a reservoir that was connected to the LA River. By the 1920s, West 7th St had developed into one of LA's first high-end shopping districts.

Today, Westlake-MacArthur Park's diverse immigrant culture is thriving alongside new development as well as a newfound interest in revitalizing the neighborhood's landmark buildings including the nearby MacArthur—in redevelopment for production and event space, as well as live/work units.

Creative Space's Neighborhood Series is a look at the places we love and work in from the perspective of a resident creative's photo lens.

In Westlake-MacArthur Park, Creative Space invited photographer Rick Rodney to show us around the neighborhood he calls home.

Photography by @rickrodneyphto



1



2



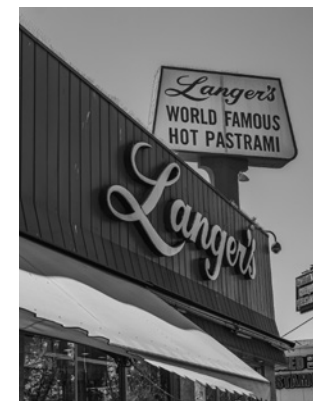
4



3



5



6

1. 2500 W 7th St's historic facade
2. MacArthur Park's street vendors.
3. The lake at MacArthur Park.
4. The Westlake/MacArthur Park Metro Station.
5. A mural by Kent Twitchell at the former Otis College building
6. The historic and world famous Langer's Deli.





Producer Jenji Kohan's office at the historic Hayworth Theater



The MacArthur



Street vendors along 7th Street



LaRayia's Bodega on W 6th St



The new residential tower at 2900 Wilshire Blvd



The historic signage at the Westlake Theatre



- 1 Dodger Stadium
- 2 Hayworth Theatre
- 3 The MacArthur / Park Plaza
- 4 Historic Otis Art Institute (1918-1997)
- 5 Historic American Cement Building
- 6 MacArthur Park
- 7 Metro Station
- 8 Downtown Los Angeles
- 9 Langer's Deli
- 10 Historic Chouinard Art Institute (1921-1971)
- 11 Historic Art Center College (1930-1945)
- 12 LaRaiya's Bodega
- 13 Historic Granada Buildings



95 Walk Score

Downtown LA

1.2 miles / ±4 minute on  
Metro B or D Lines

Echo Park

2.4 miles / ±10 minute drive

Hollywood

5 miles / ±8 minute drive  
±22 min on Metro B Line

Highland Park

8.2 miles / ±18 minute drive  
±35 minutes on Metro with  
transfer

Atwater Village

5.2 mile / ±20 minute drive

Silver Lake

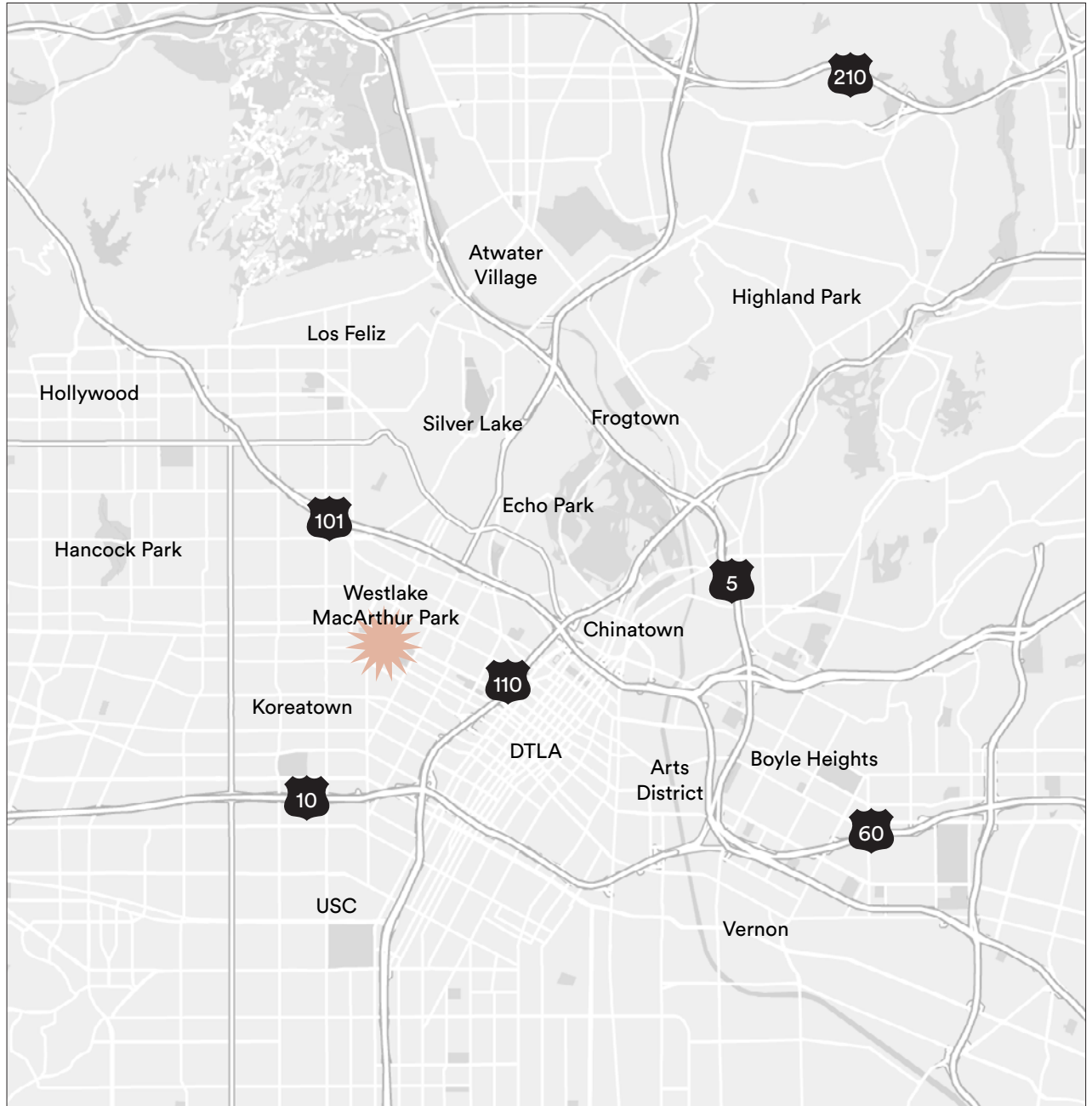
2.5 miles / ±10 minute drive

Hancock Park

3.5 miles / ±15 minute drive



You Are Here



Geoffrey Anenberg

geoffrey@creativespace.us  
Tel 323 243 2821  
DRE #01831214

Tyler Stonebreaker

tyler@creativespace.us  
Tel 310 310 5408  
DRE #01328468